

VOL

108



NSS Enterprises, Inc.

# INTEGRITY AT WORK



NSS PRODUCT

# CATALOG

---



# DISCOVER A BETTER WAY TO CLEAN

NSS Enterprises helps organizations achieve cleaner, healthier and safer buildings. We will consult with you to understand your challenges, then deliver expert advice and products to help you get where you want to go. Let's talk about your goals.

## MECHANIZATION ASSESSMENT

Managing a cleaning operation is a tough job. Whether you're managing an in-house operation or a professional cleaning company, you need to find the proper mix of people, processes, and equipment to make it all work. People in your position need expertise.

We can help.

NSS Enterprises has a staff of trained experts that can meet with you, talk about your goals and the problems that are preventing you from achieving them. Our process starts with a conversation. Once we can see your situation through your eyes, we can make a meaningful recommendation.

There's a better way to run your organization and we want to help you discover it.



## We've helped thousands of customers meet their goals.



Create healthy buildings and working environments



Reduce downtime



Improve appearance levels



Improve productivity



Retain more work



Lower the cost of equipment ownership



Improve worker safety



Improve indoor air quality



Meet sustainability standards

## Start a conversation with NSS



Scan this code with your phone, complete the short form, and our experts will contact you.

# NSS has always been driven by a belief that the act of cleaning should Do No Harm® to the environment or our customer-operators.

## Durability - Our Sustainability Strategy

At NSS, we believe that the best way to contribute to improving sustainability is through the design of products that stay on the job longer. Use our equipment well beyond the typical life of our competitor's products—that doesn't bother us at all. If our equipment is still scrubbing and polishing your floors or vacuuming your carpets seven, ten, or fifteen years from now, we know that we've made a difference by keeping one more machine out of the landfill.

Durability is a combination of two factors; structural integrity and repairability. The best place to see our commitment to the structural integrity of our designs is on your back, looking up. Underneath our machines you will find heavy-gauge steel, durable coatings and reliable drive systems. Repairability is a business we take very seriously around here. With over 400 authorized service centers, 6,000 different service parts in stock and easy after-market repairs designed into every machine, your equipment won't be on the bench for long when repairs are needed.



Look for the Do No Harm® logo on NSS literature to find out why a product is environmentally preferred.

## NSS® and the LEED® green building certification program

The LEED green building certification program is the nationally accepted benchmark for the design, construction and operation of green buildings.

For any cleaning application, NSS has a product that meets the LEED performance criteria found in EQ Credit: Green Cleaning - Equipment. These requirements include Carpet and Rug Institute Seal Of Approval, maximum noise levels, variable-speed feed pumps and on-board chemical metering, environmentally preferred gel batteries, and bumpers to reduce potential damage to building surfaces.

*Products are not reviewed or certified under LEED. LEED credit requirements cover the performance of materials in aggregate, not the performance of individual products or brands. For more information on LEED, visit [www.usgbc.org/leed](http://www.usgbc.org/leed)*

## Case Study: If Only This Pig Could Talk

Back in the 1940s, NSS introduced the now-famous "Pig" vacuum cleaner, an early ancestor of today's M-1. Its design was revolutionary and simplicity itself—a very high quality motor enclosed in a rugged cast aluminum alloy body with a protective "trap" in the front for long term durability.

The rest of the story: We re-discovered this "Pig" in 1995 at a movie theater in Indianapolis. It was still being used every day to suck up popcorn and dropped candy—a full fifty years after it was purchased. And we wouldn't be surprised to learn about other early "Pigs" still hard at work. The bottom line: product durability is one of the most environmentally friendly attributes. Because

NSS machines last and last, you won't find them in landfills anytime soon, so the environmental impact is minimal.

This Pig was used about twenty times longer than a typical commercial upright. There are about 400 fewer pounds of broken vacuum cleaners in the landfill today thanks to this one Pig. Considering the tens of thousands of NSS M-1 Pig machines in use worldwide, landfill content is reduced by hundreds of tons per year.



This M-1 "Pig" was found in service 50 years after it was built. We replaced it with a new one and it is now proudly displayed in our front lobby in Toledo, Ohio.

## Case Study: Reduce chemical usage with the Do No Harm Ecostrip Pad

Stripping floor finish has never been easier than with the Do No Harm Ecostrip pad. Remove damaged top coats with just water, leaving a surface that is ready for additional finish. Ecostrip pads use an abrasive coating not found in other stripping pads to turn the top coats of finish into a dust-free slurry which is easily collected by an automatic scrubber. Ecostrip pads can be used with most Wrangler, Champ, and eForce scrubbers and any NSS floor machine, including the Charger 1500 burnisher.



## NSS and the Carpet & Rug Institute

The CRI Seal of Approval program identifies effective carpet cleaning solutions and equipment that clean carpets right the first time and protect a facility's carpet investment. The seal of approval means that vacuums have been tested for soil removal, dust containment and carpet fiber retention. For extractors, it is a certification of their soil removal, water recovery and carpet appearance retention. Many NSS upright vacuums, wide-area vacuums, backpack vacuums and carpet extractors proudly carry this badge of distinction.



## Ergonomics: Keeping employees healthy while cleaning for health

NSS knows that quality ergonomic design pays off by enhancing value with the economic benefits of improved productivity and greater worker comfort. Among the principal ergonomic features of NSS machines:

- Handles adjust to match any operator height
- Padded handles increase operator comfort
- All machines are designed to be compact and easy to maneuver
- Carrying handles on vacuums for safe, easy transport
- Flip-up pad drivers allow for ergonomically correct posture during pad changes



Creating high performance cleaning machines that "Do No Harm" entails more than building equipment with speed, power and capacity. That's why at NSS, our products are first "human engineered" with features to protect the health and safety of the operator.

## Case Study: The Amazing Battery Burnisher

There's nothing like a burnisher to create a spectacularly high-gloss floor. Traditionally, large burnishers have been powered by propane, which has undesirable side effects including exhaust fumes, noise, heat and vibration. For years, the end result seemed to justify the means. But was there a better, safer way to burnish?

NSS worked on a better idea and the result is the revolutionary Charger family of battery burnishers, high performance battery-powered burnishers with a host of user-friendly ergonomic features. The unique flip-up pad driver makes changing pads from an ergonomically correct position easy. A highly effective dust collection system keeps indoor air clean and at 68 dBA,

the Charger burnishers are a welcome change from the potentially harmful 89 dBA, typical for a propane burnisher.





NSS automatic scrubbers are famous for their quality, performance, and simplicity. Each is built for the rigors of heavy-duty commercial and industrial use.

eForce® Scrubbers combine our patented, innovative joystick control system with rear wheel steering to make an easy to use, highly maneuverable automatic scrubber that's unlike anything on the market.

Champ Scrubbers have big ride-on power and larger deck sizes for increased productivity. Highly maneuverable and durably built, the Champ is well suited for large commercial and light industrial use.

Wrangler® walk-behind scrubbers set the standard for reliability and durability. Ask a service technician and you will find NSS equipment stays on the job longer and needs fewer repairs.



## eForce SCRUBBER

26/32" Ride-On Scrubber (660-810 mm)

### APPLICATIONS

Hard floors found in retail, healthcare facilities, schools, airports, hospitality and light industrial.

### BENEFITS

- Patented joystick allows you to work in a natural position. No steering wheel, no standing.
- The squeegee is right behind the scrub deck, picking up water in the tightest turns.
- Conservation mode. Operate with less water, less energy and less noise. Only 62 dBA.
- Easy to clean, hygienic recovery tank.

### SPECIFICATIONS

Solution Tank: 25 gallons (95 L)  
Recovery Tank: 27 gallons (102 L)  
Sound Level: 62 - 67 dBA



## CHAMP 29/33/35

29/33/35" Ride-On Scrubber (730/830/890 mm)

### APPLICATIONS

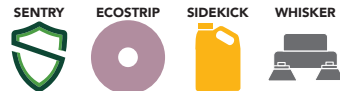
Hard floors found in retail, healthcare facilities, schools, airports, hospitality and light industrial.

### BENEFITS

- Heavy-duty construction. 7-gauge steel frame and stainless steel hardware.
- More power. A 36V battery pack and powerful motors provide more pad pressure and speed.
- Maneuverable. The steering wheel turns a full 90 degrees in both directions.
- Optional Whisker attachment reduces dust mopping by up to 80%.

### SPECIFICATIONS

Solution Tank: 29 gallons (110 L)  
Recovery Tank: 29 gallons (110 L)  
Sound Level: 69 dBA



## CHAMP 2417

24" Micro Ride-On Scrubber (600 mm)

### APPLICATIONS

Hard floors found in retail, healthcare facilities, schools, airports, and hospitality. For small and mid-sized facilities.

### BENEFITS

- Easy to use. A single button controls the scrub deck and the vacuum motor.
- Maneuverable. The squeegee behind the scrub deck picks up water in tight turns.
- Conservation mode. Press one button to run with minimal water, chemical, and power usage.
- Easy to clean, hygienic recovery tank.

### SPECIFICATIONS

Solution Tank: 17 gallons (64 L)  
Recovery Tank: 17 gallons (64 L)  
Sound Level: 69 dBA



**SENTRY**  
Sentry allows remote monitoring of equipment via the internet. (Page 8)

**ECOSTRIP**  
Ecostrip pads use abrasive diamonds to remove floor finish without chemicals. (Page 8)

**SIDEKICK**  
Sidekick Chemical Metering automatically adds chemical at the right ratio, saving time and chemicals. (Page 8)

**WHISKER**  
Whisker Vacuumized Pre-Sweep reduces dust mopping by up to 80%. (Page 8)



## WRANGLER 2730/3330 DB

27/33" Walk Behind Scrubbers (690/840 mm)

### APPLICATIONS

Hard floors in large facilities. Retail, healthcare, schools, airports, hospitality and light industrial.

### BENEFITS

- Heavy-duty construction. 7-gauge steel frame and stainless steel hardware.
- Productive. Scrub up to 90,000 square feet on a single charge.
- Easy to operate. Simple controls, mechanical deck lift make the Wrangler 2730/3330 reliable and simplify training.

### SPECIFICATIONS

Solution Tank: 30 gallons (114 L)  
Recovery Tank: 32 gallons (125 L)  
Sound Level: 66 dBA



## WRANGLER 2625 DB

26" Walk Behind Scrubber (660 mm)

### APPLICATIONS

Hard floors found in retail, healthcare facilities, schools, airports, hospitality and light industrial.

### BENEFITS

- Heavy-duty construction. 7-gauge steel frame and stainless steel hardware.
- Efficient. Large tanks compared to similar machines. Fewer trips to the sink.
- Mid-sized maneuverability. Designed for large jobs where larger machines won't fit.

### SPECIFICATIONS

Solution Tank: 25 gallons (95 L)  
Recovery Tank: 27 gallons (102 L)  
Sound Level: 68 dBA



## WRANGLER 2616 DB

26" Walk Behind Scrubber (660 mm)

### APPLICATIONS

Hard floors found in retail, healthcare facilities, schools, airports, hospitality and light industrial.

### BENEFITS

- Heavy-duty construction. 7-gauge steel frame and stainless steel hardware.
- Economical. The Wrangler 2616 DB is an extraordinary value—low cost productivity.
- Mid-sized maneuverability. Designed for large jobs where larger machines won't fit.

### SPECIFICATIONS

Solution Tank: 16 gallons (61 L)  
Recovery Tank: 17 gallons (64 L)  
Sound Level: 65 dBA



## WRANGLER 2016 DB/AB/AE

20" Walk Behind Scrubber (510 mm)

### APPLICATIONS

Hard floors found in retail, convenience stores, healthcare, schools, airports, and hospitality.

### BENEFITS

- Heavy-duty construction. 7-gauge steel frame and stainless steel hardware.
- Drive options. Powered wheel drive or pad assist drive models.
- Power options. Battery powered or 120V cord power.

### SPECIFICATIONS

Solution Tank: 16 gallons (61 L)  
Recovery Tank: 17 gallons (64 L)  
Sound Level: 65 dBA



## WRANGLER 2012 AB/DB

20" Walk Behind Scrubber (510 mm)

### APPLICATIONS

Hard floors found in retail, convenience stores, healthcare, schools, airports, and hospitality.

### BENEFITS

- Durable and reliable. Built for tough commercial environments.
- Simple controls. Easy for new staff to start working quickly.
- Easy maintenance. Hygienic recovery tank opens wide for clean out. Complete battery access. Solution tank filter.

### SPECIFICATIONS

Solution Tank: 12 gallons (45 L)  
Recovery Tank: 14 gallons (53 L)  
Sound Level: 62 dBA



## WRANGLER 1503 AB/AE

15" Walk Behind Micro Scrubber (380 mm)

### APPLICATIONS

Hard floors found in retail, convenience stores, restrooms, healthcare, schools, airports, and hospitality.

### BENEFITS

- Compact. Small footprint and a squeegee behind the scrub deck for efficient water pick-up.
- Maintenance free batteries. AGM batteries standard. Just plug in when done.
- Easy Fill/Drain. Sink fill hose adapter included. Removable recovery tank.

### SPECIFICATIONS

Solution Tank: 3.7 gallons (14 L)  
Recovery Tank: 4.2 gallons (16 L)  
Sound Level: 65 dBA



**ECOSTRIP PADS**  
Chemical Free Stripping

**DESCRIPTION**  
Diamond-abrasive coated scrubbing pads for deep scrubbing or damp stripping. With just water, prepare a floor for more finish or burnishing.

For every day scrubbing and burnishing, use the EcoStrip Buff pad to clean and shine the floor.

**BENEFITS**

- Strip floors with just water. Easy disposal of stripped finish.
- As easy as scrubbing a floor.
- Durable pads. Scrub about 700,000 square feet with a single pad. When damp stripping, rinse the pad every 5,000 square feet to restore abrasive properties.

**SPECIFICATIONS**

EcoStrip 400: 12, 13, 14, 15, 16, 17, 18 and 20"  
EcoStrip Buff: 20"



**WHISKER**  
Vacuumized Pre-Sweep

**DESCRIPTION**  
Add one-pass sweeping and scrubbing to any Champ 29/33/35 ride-on scrubber. Two side brooms sweep debris towards a central collection bin. A vacuum motor sucks up fine dust into a 99.4% efficient vacuum bag.

**BENEFITS**

- Eliminate up to 80% of dust mopping labor.
- Reduce spend on dust mop heads and dust mop treatment spray.
- An actuator lifts the Whisker out of the way for transport and double scrubbing.

**SPECIFICATIONS**

Side Brooms: 19" (480 mm) each  
Broom Speed: 100 RPM  
Vacuum Motor: 0.6 HP (440 W)  
Sound Level: 69 dBA



**SENTRY™**  
Wireless Equipment Monitoring

**DESCRIPTION**  
Monitor equipment through the internet. Make smarter decisions about maintenance and avoid costly penalties caused by equipment downtime.

**FUNCTIONS**

- Record machine run time.
- Record charging time.
- Report impacts using an integrated accelerometer.
- Keep track of battery maintenance with an audible reminder.
- Track battery age. Record when new batteries are installed.
- Request for service. Press a button to record that the machine needs service. Send an automatic email to the right people when service is needed.



**SIDEKICK**  
Automatic Chemical Metering

**DESCRIPTION**  
With the Sidekick, you simply install your bottle of chemical on the scrubber. The Sidekick adds chemicals to match the dilution ratio you set.

**BENEFITS**

- Eliminates wasted chemical caused by inaccurate measurements.
- Use any F-Style bottle. Using the original container improves OSHA hazard communication compliance.
- Mixes chemicals into the water on the way to the scrub deck. Keeps the solution tank clean and prevents clogs.

**SPECIFICATIONS**

Dilution Ratios: 20:1, 32:1, 50:1, 64:1, 100:1, 128:1, 150:1, 200:1, 256:1 and 300:1



**AUTO-FILL KIT**

Simplify Wet Acid Battery Maintenance

**DESCRIPTION**

When maintained correctly, wet acid batteries are the most cost effective way to power your equipment. Adding an auto-fill kit to your battery packs simplifies battery maintenance and makes it easier to follow the manufacturer's recommendations.

**BENEFITS**

- Reduce battery maintenance labor by up to 90%. Maintain the batteries faster using a hand pump to fill each battery simultaneously.
- Each battery cell is equipped with a shut-off valve that prevents overfilling. Overfilling batteries can create potentially hazardous conditions and machine damage due to acid exposure.
- Because it's a sealed system, you lower your employee's risk of injury due to battery acid exposure.

**HOW TO CHOOSE THE RIGHT AUTOMATIC SCRUBBER**

Choosing the right scrubber is a critical step in planning your cleaning program. In most cases, the right scrubber is the one that minimizes your labor costs, allowing your employees to efficiently complete their work and free up time for other tasks. The labor savings from using a larger machine will easily offset the additional capital expense.

Topics you will want to consider when selecting a scrubber are:

- Job Size. How much area do you need to scrub each day?
- Space constraints. Are there narrow areas that could restrict the scrubber? Doorways? Check-out aisles?
- Layout. Do I need to clean many aisles or hallways? The machine you choose can impact the number of passes you need.

NSS Representatives are experts in this area and can help you through this process. Contact NSS and we can help you by providing a Mechanization Assessment to improve your cleaning program.

**JOB SIZE (square feet)**

200,000	Champ 3529
140,000	Champ 3329
120,000	Champ 2929
100,000	Wrangler 3330 / eForce 32
80,000	Wrangler 2730 / eForce 26
60,000	Champ 2417 / Wrangler 2625 Wrangler 2616
40,000	Wrangler 2016
25,000	Wrangler 2012
0-10,000	Wrangler 1503

**CLEANING PASSES REQUIRED**

Aisle Width	6 ft	8 ft	10 ft	12 ft
Champ 3529	3	3	4	5
Champ 3329	3	3	4	5
Champ 2929	3	4	5	6
Champ 2417	4	5	6	7
Wrangler 3330	3	3	4	5
Wrangler 2730	3	4	5	6
Wrangler 2625	3	4	5	6
Wrangler 2616	3	4	5	6
Wrangler 2016	4	6	7	8
Wrangler 2012	4	6	7	8





NSS battery burnishers were designed to help customers achieve a high-gloss shine while escaping the hassles of propane machines. The concerns with propane—frequent repairs, high maintenance costs, disruptive noise levels, indoor carbon monoxide emissions, exposed hot engine parts, and other safety issues—were only tolerated as there were no better options. Now that has changed.

NSS battery burnishers have the power and pad pressure to produce a high-gloss shine. Even better, quiet operation allows scheduling flexibility to burnish in occupied facilities anytime, with minimal disruption to customers and co-workers. To maintain indoor air quality, every NSS battery burnisher includes a Vac-Trac system to collect floor finish powder and pad dust.

NSS battery burnishers are built for ease of operation and long life. Heavy-duty steel structures provide a solid, durable foundation.

Each machine is designed with a flip-up pad driver for easy pad changes—just one example of the many operator-friendly features designed into every NSS battery burnisher.

## ADD A SULKY

Add the sulky option on the Charger 2022 DB and Charger 2717 DB for stand-on rider capability. The sulky stows on the handle when not in use.



**eForce BURNISHER**  
27" Ride-on Burnisher (680 mm)

### APPLICATIONS

Hard floors found in retail, healthcare facilities, schools, airports, and hospitality.

### BENEFITS

- Patented joystick allows you to work in a natural position. No steering wheel, no standing.
- Smart motor controller keeps the pad speed constant, even as the batteries wear down.
- Efficient dust collection system captures floor finish dust.
- Flip-up pad driver for standing pad changes.

### SPECIFICATIONS

Pad Speed: 1700 RPM  
Pad Pressure: 60, 75 or 90 lbs (27/34/41 kg)  
Sound Level: 68 dBA



**CHARGER 2022 DB**  
20" Walk Behind Driven Burnisher (510 mm)

### APPLICATIONS

Hard floors found in retail, healthcare facilities, schools, airports, and hospitality.

### BENEFITS

- Smart motor controller keeps the pad speed constant, even as the batteries wear down.
- Efficient dust collection system captures floor finish dust.
- Flip-up pad driver for standing pad changes.
- Optional Sulky for stand-up ride-on capability.

### SPECIFICATIONS

Pad Speed: 2200 RPM  
Pad Pressure: 70 lbs (34 kg)  
Sound Level: 68 dBA



**CHARGER 2717 DB/AB**  
27" Walk Behind Burnisher (680 mm)

### APPLICATIONS

Hard floors found in retail, healthcare facilities, schools, airports, and hospitality.

### BENEFITS

- Smart motor controller keeps the pad speed constant, even as the batteries wear down.
- Efficient dust collection system captures floor finish dust.
- Drive Options: Wheel Drive and Pad Assist.
- Optional Sulky for stand-up ride-on capability.
- Flip-up pad driver for standing pad changes.

### SPECIFICATIONS

Pad Speed: 1700 RPM  
Pad Pressure: 80 lbs (36 kg)  
Sound Level: 68 dBA



**CHARGER 2022 ABLT**  
20" Walk Behind Pad-Assist Burnisher (510 mm)

### APPLICATIONS

Hard floors found in retail, healthcare facilities, schools, airports, and hospitality.

### BENEFITS

- Smart motor controller keeps the pad speed constant, even as the batteries wear down.
- Efficient dust collection system captures floor finish dust.
- Flip-up pad driver for standing pad changes.

### SPECIFICATIONS

Pad Speed: 2200 RPM  
Pad Pressure: 70 lbs (34 kg)  
Sound Level: 68 dBA





NSS cord-electric burnishers produce a high-gloss shine and are built to last for years to come.

All NSS cord-electric burnishers have a powerful 1.5 HP motor and a built-in pad driver for smooth, balanced, and safe operation. Each is designed for quiet performance, operator comfort, and simple usage. The standard safety lockout mechanism helps prevent accidental or unauthorized use.

The Charger 1500—a hallmark of the NSS line—is unmatched for its durability and versatility. The 7-year warranty on these Chargers speaks for itself. The Mustang 1500, Mustang 1500 Vac-Trac, and Galaxy 1500 are outstanding performers, and outstanding values too.



**CHARGER 2500**

20" High Speed Burnisher (510 mm)

APPLICATIONS

Marble and terrazzo floors found in retail, healthcare, schools, airports, and hospitality.

BENEFITS

- Quickly restores shine after damp mopping or scrubbing.
- Adjustable knob allows the user to set the pad pressure and adjust as the pad wears
- Easy to use. A color coded meter keeps the operator aware of the pad pressure during use.

SPECIFICATIONS

Pad Speed: 2500 RPM  
Pad Motor: 1.5 HP (1100 W)  
Sound Level: 63 dBA

**ECOSTRIP** **WARRANTY**

**BUFF** **7**  
Year



**CHARGER 1500**

20" High Speed Burnisher (510 mm)

APPLICATIONS

Hard floors found in retail, healthcare facilities, schools, airports, and hospitality.

BENEFITS

- Versatile. Use the Charger 1500 to burnish, spray buff and damp strip.
- Easy to transport. The handle is removable for transportation and reversible for compact storage.
- Rugged construction. Corrosion resistant cast aluminum base and heavy duty cord strain relief.

SPECIFICATIONS

Pad Speed: 1500 RPM  
Pad Motor: 1.5 HP (1100 W)  
Sound Level: 64 dBA

**ECOSTRIP** **WARRANTY**

**BUFF** **7**  
Year



**MUSTANG 1500**

20" High Speed Burnisher (510 mm)

APPLICATIONS

Hard floors found in retail, healthcare facilities, schools, airports, and hospitality.

BENEFITS

- Affordable value. Same burnishing performance in a lower cost design.
- Built-in wheels for easy transport to the job site.
- Optional Vac-Trac dust collection system captures floor finish powder.

SPECIFICATIONS

Pad Speed: 1500 RPM  
Pad Motor: 1.5 HP (1100 W)  
Sound Level: 63 dBA

**ECOSTRIP**

**BUFF**



**GALAXY 1500**

20" High Speed Burnisher

APPLICATIONS

Hard floors found in retail, healthcare facilities, schools, airports, and hospitality.

BENEFITS

- Economical choice. Same performance as other burnishers at our lowest price.
- Built-in wheels for easy transport to the job site.
- Durable chrome plated steel construction.

SPECIFICATIONS

Pad Speed: 1500 RPM  
Pad Motor: 1.5 HP (1100 W)  
Sound Level: 63 dBA

**ECOSTRIP**

**BUFF**



NSS floor machines are famed for quality, reliability, and easy operation. Is there a difference? Absolutely. Heavy-duty triple planetary gear boxes are just one example of the engineering and quality built into every NSS floor machine.

A variety of machines are available to meet your job specifications and price point. An optional solution tank is available for speed scrubbing and carpet shampooing. And a safety lockout mechanism restricts unauthorized or unintended operation.

Perform a wide variety of floor care operations—for both hard floors and carpet—with NSS floor machines. Use to polish, spray buff, scrub, or wet strip hard floors. Add a bonnet to clean carpet between extractions. Whatever your budget or application, NSS offers a durable floor machine to meet your needs.



## MAVERICK 300

17/20" Variable Floor Machine (430/510 mm)

### APPLICATIONS

Scrubbing and polishing hard floors found in retail, healthcare facilities, schools, airports, and hospitality. Bonnet cleaning carpet.

### BENEFITS

- Versatile. Adjustable pad speed. Continuously variable between 200 RPM and 310 RPM.
- Low speed for scrubbing hard floors.
- High speed for polishing hard floors and bonnet cleaning carpet.

### SPECIFICATIONS

Pad Speed: Variable 200 to 310 RPM  
Pad Motor: 1.5 HP (1100 W)  
Sound Level: 63 dBA

### ECOSTRIP



## MUSTANG 17/20/DS

17/20" Floor Machine (430/510 mm)

### APPLICATIONS

Various hard floors found in retail, healthcare, schools, airports, and hospitality. Bonnet cleaning carpet.

### BENEFITS

- Affordable value. Same performance in a durable mid-range design.
- Two models. Single speed and dual speed.
- More torque. 11:1 gear ratio provides more torque for demanding jobs.
- Dual Speed (DS) version runs at either 180 RPM for scrubbing or 300 RPM for buffing.

### SPECIFICATIONS

Pad Speed: 155 RPM (Single) or 180/300 RPM (DS)  
Pad Motor: 1.0 HP (745 W) or 1.5 HP (1100 W)  
Sound Level: 58 dBA

### ECOSTRIP



## THOROUGHbred

17/20" Floor Machine (430/510 mm)

### APPLICATIONS

Various hard floors, including stone and marble, found in retail, healthcare, schools, airports, and hospitality. Bonnet cleaning carpet.

### BENEFITS

- Heavy-Duty. Built for year after year of dependable service. Corrosion resistant aluminum motor mount.
- Optional weights. Add up to three 10 lb weights for cleaning stone and marble floors.
- More torque. 11:1 gear ratio provides more torque for demanding jobs.

### SPECIFICATIONS

Pad Speed: 155 RPM  
Pad Motor: 1.0 HP (745 W) or 1.5 HP (1100 W)  
Sound Level: 68 dBA

### ECOSTRIP



### WARRANTY



## GALAXY 17/20/DS

17/20" Floor Machine (430/510 mm)

### APPLICATIONS

Various hard floors found in retail, healthcare, schools, airports, and hospitality. Bonnet cleaning carpet.

### BENEFITS

- Economical choice. Same performance as other floor machines at our lowest price.
- Two models. Single speed and dual speed.
- More torque. 11:1 gear ratio provides more torque for demanding jobs.
- Dual Speed (DS) version runs at either 180 RPM for scrubbing or 300 RPM for buffing.

### SPECIFICATIONS

Pad Speed: 155 RPM (Single) or 180/300 RPM (DS)  
Pad Motor: 1.5 HP (1100 W)  
Sound Level: 58 dBA

### ECOSTRIP



## 4 GALLON BATTERY POWERED ELECTROSTATIC SPRAYER

**ELECTRO-MIST 4B**

The Electro-Mist™ 4B is ideal for spot spraying or wide-area spraying where operator mobility is a must. The electrostatic spray wand charges the solution to deliver a consistent spray to the front, back and sides of surfaces.

- Fast and effective. This sprayer is perfect for covering large-scale areas quickly. Because it's cordless, your staff can quickly move from surface to surface.
- Large capacity 4 gallon tank allows for up to 2.5 hours of spray time per tank.
- A 12V maintenance free battery provides up to ten hours of runtime. Built-in battery charger.
- Constructed from durable stainless steel and other chemical resistant materials, the Electro-Mist 4B is built to endure commercial cleaning environments.
- Manufactured in the USA. The Electro-Mist 4B can be repaired by any local NSS Distributor or Service Center.

## SPECIFICATIONS

Tank Capacity: 4 gallons (15L)  
 Coverage Per Hour\*: Up to 22,500 ft<sup>2</sup>  
 Spray Time Per Tank: Up to 2.5 hours  
 Hose Length: 9 feet (50-foot hose available)  
 Droplet Size: 70 or 100 microns  
 Sprayer Runtime: Up to 10 hours  
 Battery: 12V, 12 AH, Sealed AGM Battery  
 Warranty: 3 Year Limited Warranty

\*Not in reference to contact times. Follow contact times as shown on the product label.



## THE ELECTRO-MIST 4B VS. THE COMPETITION

		
<b>Electro-Mist 4B</b>	<b>10 Hours</b>	<b>2.5 Hours</b>
<b>Handheld Sprayers</b>	<b>2-4 Hours</b>	<b>3-10 Minutes</b>
<b>Backpack Sprayers</b>	<b>4-5 Hours</b>	<b>1-1.5 Hours</b>

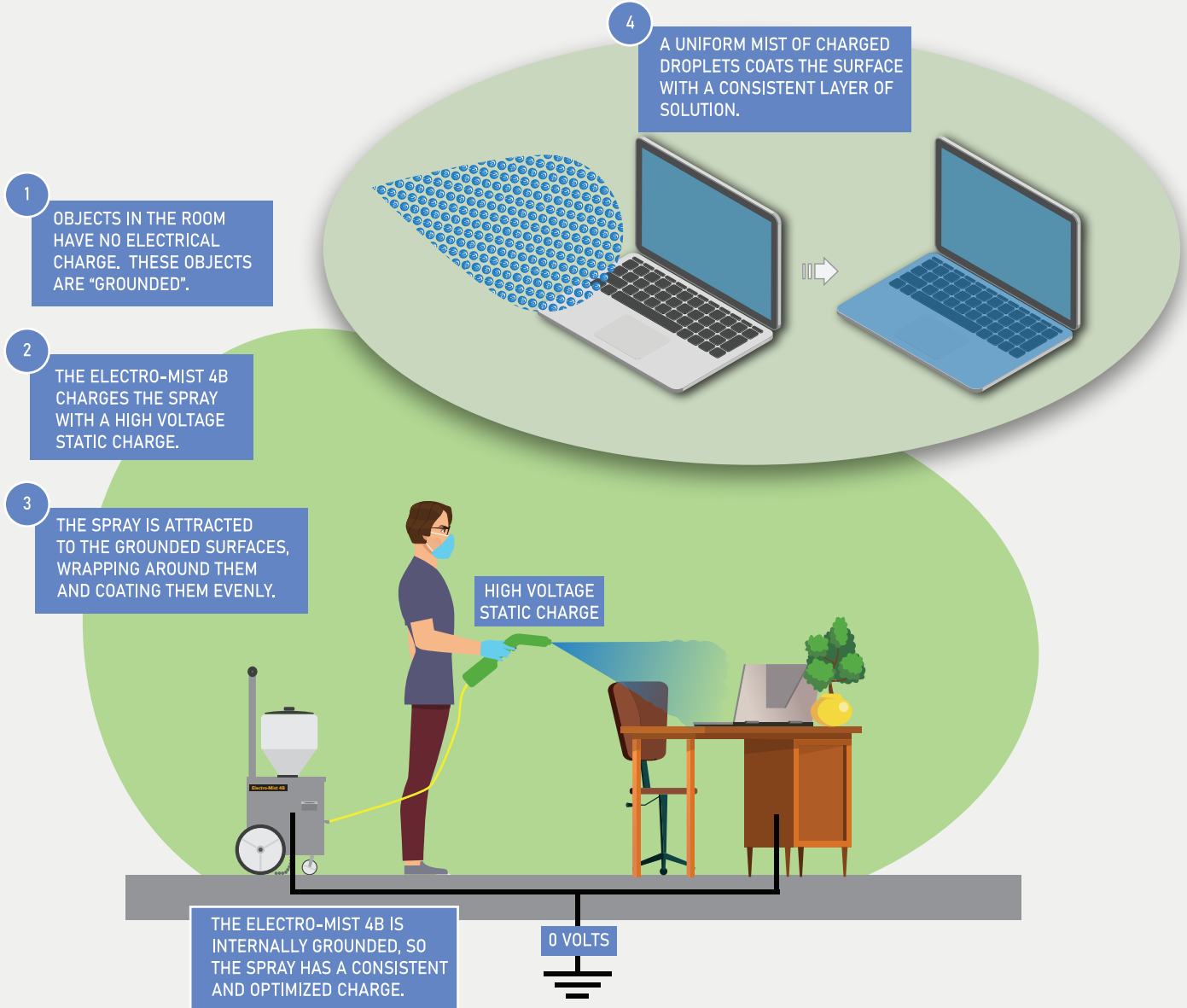
More runtime and a larger tank adds up to more productivity. Simply put, the Electro-Mist 4B surpasses the capabilities of any other electrostatic sprayer on the market.



If using Electro-Mist sprayers with a disinfectant, be sure to follow the chemical manufacturer's instructions regarding application, dilution, coverage and dwell time.



## HOW ELECTROSTATIC SPRAYING WORKS



## THE ELECTRO-MIST ADVANTAGE



### RELIABLE

Built to endure real-world conditions, the Electro-Mist 4B is constructed from high-grade components, chemical resistant polymers and stainless steel. Two filters, one in the solution line and one in the wand, help protect against obstructions. The Electro-Mist 4B can be easily repaired and maintained for years.



### PRODUCTIVE

The Electro-Mist 4B is battery powered with large wheels and high-quality casters. Operators can quickly disinfect an area and move on without worrying about cords, carrying heavy hand-held electrostatic sprayers, or carrying gallons of solution on their backs.

With an extraordinary 2.5 hours of continuous spray time per tank, the Electro-Mist 4B lets your staff complete large jobs without stopping.



### ACCURATE

The Electro-Mist 4B uses an electrical charge to help direct the solution to the targeted surface. Droplets adhere to surfaces and form a consistent layer rather than lingering in the air.



The Opti-Mist sprayer line provides consistent, complete spraying coverage for jobs of any size. From a simple hand pump sprayer to the innovative Opti-Mist 20B, NSS has a sprayer to fit your application.

The Opti-Mist 20B's patent pending spray bars and high capacity tank make it the ultimate large-area sprayer.



If using Opti-Mist sprayers with a disinfectant, be sure to follow the chemical manufacturer's instructions regarding application, dilution, coverage and dwell time.



**OPTI-MIST 20B**

20 Gallon Battery-Powered Dual Sprayer

APPLICATIONS

Spot spraying or wide-area spraying in large buildings where productivity is a must.

BENEFITS

- Dual purpose sprayer. Hand spray wand and wide-area floor sprayer. 22-inch to 84-inch path.
- Hand spray wand comes with a 25 foot coiled hose for efficient flexibility.
- The 20 gallon tank holds enough solution to cover up to 60,000 square feet.
- The battery pack allows up to 10 hours of spraying per charge.

SPECIFICATIONS

Tank Size: 20 gallons (75 L)  
Hose Length: 25 feet (7.6 m)  
Runtime: Up to 10 hours



**OPTI-MIST 3E**

3 Gallon Cord-Electric Sprayer

APPLICATIONS

Spot spraying or wide-area spraying where extended runtime is a must.

BENEFITS

- The three gallon tank holds enough solution to cover up to 9,000 square feet.
- Hand spray wand comes with a 25 foot coiled hose and a 20 foot cord for efficient flexibility.
- Retractable transport handle and wheels for easy transport to the work site.

SPECIFICATIONS

Tank Size: 3 gallons (11.5 L)  
Hose Length: 25 feet (7.6 m)  
Cord Length: 20 feet (6.0 m)



**OPTI-MIST BB**

4 Gallon Battery-Powered Backpack Sprayer

APPLICATIONS

Spot spraying or wide-area spraying where operator mobility is a must.

BENEFITS

- The four gallon tank holds enough solution to cover up to 12,000 square feet.
- Lithium-ion battery pack provides up to two hours of spraying time.
- In-tank and in-wand filters help prevent clogs by keeping debris out of the spray tip.

SPECIFICATIONS

Tank Size: 4 gallons (15 L)  
Hose Length: 48 inches (122 cm)  
Runtime: Up to 2 hours



**OPTI-MIST P**

3 Gallon Hand Pump Sprayer

APPLICATIONS

Spot spraying and wide-area spraying with a consistent, controlled mist.

BENEFITS

- Simple and effective. The Opti-Mist P gives your staff a simple way to get consistent coverage.
- The three gallon solution tank holds enough solution to cover up to 9,000 square feet.
- In-tank and in-wand filters help prevent clogs by keeping debris out of the spray tip.

SPECIFICATIONS

Tank Capacity: 3 gallons (11.5 L)  
Hose Length: 48 inches (122 cm)





NSS sweepers keep your facility looking its best—inside and out. Built for long life, each model is easy to use and maneuverable. Three sweepers are available to clean any application or floor surface, including hard floors and carpet.

Choose the Manta RS 34 ride-on to sweep large areas quickly. The Sidewinder 27 MB is a compact battery-powered walk-behind sweeper, ideal for large areas. Replace your push broom with the Sidewinder 30 and sweep five times faster.



**SIDEWINDER 30**

30" Mechanical Sweeper (760 mm)

APPLICATIONS

Designed for indoor and outdoor sweeping on hard floors and surfaces.

BENEFITS

- Improve productivity. Sweep five times faster than push brooms.
- Side brooms make sure dirt near walls and curbs is picked up by the main brush.
- Manual operation makes the Sidewinder 30 a great choice for noise sensitive environments.

SPECIFICATIONS

Hopper Capacity: 13.2 gallons (50 L)



**SIDEWINDER 27 MB**

27" Battery-Powered Sweeper (690 mm)

APPLICATIONS

Designed for indoor and outdoor sweeping on hard surfaces and carpet.

BENEFITS

- Effectively removes dust and large debris using counter-rotating main brushes.
- Side broom makes sure dirt near walls and curbs is picked up by the main brushes.
- A cellulose filter, with manual shaker, helps maintain good indoor air quality while sweeping.

SPECIFICATIONS

Hopper Capacity: 11.3 gallons (43 L)  
Sound Level: 67 dBA



**MANTA 34 RS**

34" Ride-On Sweeper (860 mm)

APPLICATIONS

Designed for indoor and outdoor sweeping on hard surfaces and carpet.

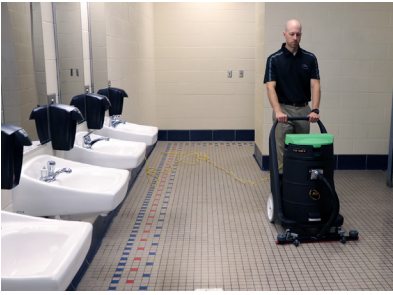
BENEFITS

- High productivity. Sweep up to 47,000 square feet per hour.
- Effective sweeping. The main brush, side broom and vacuum motor collect large debris and dust.
- Excellent dust control. Three canister filters clean the air before exhausting it back to the environment.

SPECIFICATIONS

Hopper Capacity: 13.2 gallons (50 L)  
Sound Level: 67 dBA





NSS offers three lines of wet/drys to provide options for any need and budget. Choose from the extreme performance BP Rangers, the affordable Colts, or the economical Alphas. All are versatile machines, handy for jobs ranging from dry spill pickup to stripping solution recovery.

Standard on all BP Ranger and Colt models, NSS's patented noise reduction system means quiet operation without diminishing vacuum performance. All BP Rangers and most Colt models have a tip-dispose base. Optional front mount squeegees dramatically boost productivity. For enhanced IAQ, a HEPA filter is available on most Colt models.



**COLT 1050 P**

10.5 Gallon Polyethylene Wet/Dry Vacuum

APPLICATIONS

Restoration and water recovery, construction clean-up, floor stripping.

BENEFITS

- Affordable performance. Powerful and versatile wet/dry vacuum at a mid-range price.
- Optional front mount squeegee for quick, large area liquid recovery.
- Customize with tool kits sold separately.
- Drain plug for easy emptying.

SPECIFICATIONS

Capacity: 10.5 gallons (38 L)  
Sound Level: 62 dBA



**BP RANGER 1250 S**

12.5 Gallon Stainless Steel Wet/Dry Vacuum

APPLICATIONS

Restoration and water recovery, construction clean-up, floor stripping. Stainless steel tanks are easier to clean and sanitize.

BENEFITS

- Heavy-duty. Designed for year after year of dependable service. Five to ten times longer life than typical wet/dry vacuums.
- Optional front mount squeegee for quick, large area liquid recovery.
- Customize with tool kits sold separately.
- Tip-dispose base for easy dumping into toilets.

SPECIFICATIONS

Capacity: 12.5 gallons (47 L)  
Sound Level: 65 dBA

WARRANTY TIP BASE



**COLT 1250 S**

12.5 Gallon Stainless Steel Wet/Dry Vacuum

APPLICATIONS

Restoration and water recovery, construction clean-up, floor stripping. Stainless steel tanks are easier to clean and sanitize.

BENEFITS

- Affordable performance. Powerful and versatile wet/dry vacuum at a mid-range price.
- Optional front mount squeegee for quick, large area liquid recovery.
- Customize with tool kits sold separately.
- Tip-dispose base for easy dumping into toilets.
- Optional HEPA filter available.

SPECIFICATIONS

Capacity: 12.5 gallons (47 L)  
Sound Level: 62 dBA

TIP BASE



**BP RANGER 1450 P**

14.5 Gallon Polyethylene Wet/Dry Vacuum

APPLICATIONS

Restoration and water recovery, construction clean-up, floor stripping.

BENEFITS

- Heavy-duty. Designed for year after year of dependable service. Five to ten times longer life than typical wet/dry vacuums.
- Optional front mount squeegee for quick, large area liquid recovery.
- Customize with tool kits sold separately.
- Tip-dispose base for easy dumping into toilets.

SPECIFICATIONS

Capacity: 14.5 gallons (55 L)  
Sound Level: 65 dBA

WARRANTY TIP BASE



**COLT 1450 P**

14.5 Gallon Polyethylene Wet/Dry Vacuum

APPLICATIONS

Restoration and water recovery, construction clean-up, floor stripping.

BENEFITS

- Affordable performance. Powerful and versatile wet/dry vacuum at a mid-range price.
- Optional front mount squeegee for quick, large area liquid recovery.
- Customize with tool kits sold separately.
- Tip-dispose base for easy dumping into toilets.
- Optional HEPA filter available.

SPECIFICATIONS

Capacity: 14.5 gallons (55 L)  
Sound Level: 62 dBA

TIP BASE







## FRONT MOUNT SQUEEGEES

BP Rangers, Colts, and Alpha 24

### APPLICATIONS

Optional accessory for large area liquid recovery.

### BENEFITS

- Recovers liquid up to four times faster than using a hose and squeegee tool.
- Ideal when stripping large areas or drying flooded floors.
- Foot operated squeegee allows operators to raise and lower the squeegee without bending over.

**PRO TIP:** BP Ranger and Colt power heads are free standing. Set them on



the floor and run them to circulate air through the internal chambers, completely drying them after every use.

## BP RANGER AND COLT TOOL KITS

Like our machines, NSS tools and accessories are abuse-resistant and built to last. Attention to detail, functionality, and user-friendly operation are hallmarks of our wide array of tools. Our offering is extensive—you will find unique tools for specialty applications that can't be found anywhere else.

We have over 25 tool kits designed to meet different customer needs. Wet or dry, for ceilings, walls, or floors, we have the right kit to help you get your job done more easily, quickly, and safely.

We have confidence in our tools. That's why many are backed by a 10-year warranty, which speaks volumes about their life expectancy and quality of construction.



\*shown with optional squeegee



## ALPHA 24

24 Gallon Polyethylene Wet/Dry Vacuum

### APPLICATIONS

Restoration and water recovery, construction clean-up, floor stripping.

### BENEFITS

- Economical, solid performance.
- Large tank for big jobs.
- Optional front mount squeegee for quick, large area liquid recovery.
- Includes a tool kit for wet and dry pick-up.
- Drain hose for quick emptying into slop sinks and floor drains.

### SPECIFICATIONS

Capacity: 24 Gallons (90 L)  
Sound Level: 72 dBA



## ALPHA 16

16 Gallon Polyethylene Wet/Dry Vacuum

### APPLICATIONS

Restoration and water recovery, construction clean-up, floor stripping.

### BENEFITS

- Economical, mid-sized vacuum.
- Includes a tool kit for wet and dry pick-up.
- Drain hose for quick emptying into slop sinks and floor drains.

### SPECIFICATIONS

Capacity: 16 Gallons (60 L)  
Sound Level: 72 dBA



## ALPHA 8

8 Gallon Polyethylene Wet/Dry Vacuum

### APPLICATIONS

Restoration and water recovery, spill clean-up, construction clean-up, floor stripping.

### BENEFITS

- Economical, small-sized vacuum.
- Includes a tool kit for wet and dry pick-up.

### SPECIFICATIONS

Capacity: 8 Gallons (30 L)  
Sound Level: 72 dBA



## ALPHA 4

4 Gallon Polyethylene Wet/Dry Vacuum

### APPLICATIONS

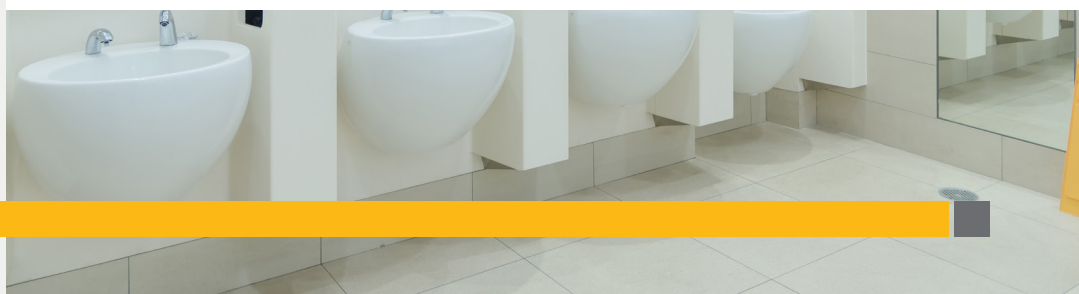
Restoration and water recovery, spill clean-up, construction clean-up, floor stripping.

### BENEFITS

- Economical, mid-sized vacuum.
- Includes a tool kit for wet and dry pick-up.

### SPECIFICATIONS

Capacity: 4 Gallons (15 L)  
Sound Level: 72 dBA





NSS carpet vacuums have earned a reputation for great performance, reliability, and long life. The legendary Model M-1 "Pig"®—the most productive, durable—and versatile vacuum available—remains a classic after decades on the market. It has the power to thoroughly and safely clean areas up to 20 feet in the air. That means your staff keeps their feet on the ground and off of ladders, a true safety benefit.

The Pacer 30 is the commercial industry standard in wide-area vacuums, period. The lightweight, ergonomic Pacer 12/15 UE models have set a new quality standard in single-motor uprights.

For superior productivity when spot vacuuming, choose the cordless Outlaw PB. With NiMH batteries and a patented instant trigger, the Outlaw PB will run up to 2 hours on a charge, and clean twice as fast as a corded backpack. Sound incredible? It is. Thanks to its quiet operation, the Outlaw PB is ideal for use in healthcare facilities, 24/7 operations, and for cleaning occupied areas, day or night.



**PACER 12/15 UE**

12/15" Single-Motor Vacuum (300/380 mm)

APPLICATIONS

Vacuuming in hospitality, schools, commercial cleaning, retail and healthcare. Areas with tight spaces and overhangs.

BENEFITS

- Highly effective. CRI Gold Rated vacuum with exceptional cleaning capabilities.
- Improve indoor air quality. HEPA filter standard. Captures 99.97% of particulates at 0.3 microns.
- Improve indoor air quality. 100-Hour Filter Kit makes tracking and replacing filters easy.
- Easy to maintain. No tools to change the cord and brush.

SPECIFICATIONS

Bag Capacity: 5.0 quarts (5.5 L)  
Sound Level: 67 dBA



**SWIFTVAC 6**

Corded Backpack Vacuum

APPLICATIONS

Vacuuming in hospitality, schools, commercial cleaning, retail and healthcare. Areas with tight spaces and overhangs.

BENEFITS

- Improve productivity. Vacuum up to 3 times faster than an upright.
- Lightweight. Less fatiguing to use. Only weighs 9.6 pounds.
- Less downtime for clogs. Hose continuously widens from the wand to the intake.

SPECIFICATIONS

Bag Capacity: 6.5 quarts (6 L)  
Sound Level: 69 dBA



**PACER 30**

30" Wide-Area Vacuum (760 mm)

APPLICATIONS

Vacuuming in hospitality, schools, commercial cleaning, retail and healthcare. Large areas and hallways.

BENEFITS

- Save labor. Vacuum open areas up to 8.5 times faster than with an upright vacuum.
- Improve indoor air quality. Optional HEPA filter. Captures 99.97% of particulates at 0.3 microns.
- Maneuverable. Large rear wheels make the Pacer 30 easy to handle.

SPECIFICATIONS

Bag Capacity: 56 quarts (53 L)  
Sound Level: 69 dBA



**OUTLAW PB**

Cordless Backpack Vacuum

APPLICATIONS

Spot cleaning in hospitality, schools, commercial cleaning, retail and healthcare. Stairwells and other areas without electrical service.

BENEFITS

- Unparalleled productivity. Spot clean up to 30,000 square feet per hour.
- Spot clean for up to 120 minutes per set of batteries. Sold in 2 and 4 battery versions.
- Quiet operation. At 65 dbA, the Outlaw PB can be used for daytime cleaning.

SPECIFICATIONS

Debris Capacity: 6.4 quarts (6 L) bag-less  
Sound Level: 65 dBA



The Model M-1 “Pig”® is the powerhouse vacuum from NSS® that leaves uprights in the dust. Loyal users call it the “Pig” because it loves dirt. Smart maintenance professionals use the “Pig” because it’s the longest-lasting, most versatile portable vacuum ever made.

With incredible suction and a lightweight wand, the “Pig” reaches up to 20 ft. overhead to clean areas other vacuums can’t—vents, beams, and even ceilings and skylights. Gone are the safety risks and exposure to insurance claims associated with using a ladder.

The M-1 “Pig” is built smart, with a motor that lasts up to 24 times longer than ordinary upright motors and has fewer parts to replace. The 12,000 hour Model M-1 motor is specifically designed for continuous-duty commercial cleaning and extra long service life. The “Pig,” through its design and construction, minimizes down time—no belt changes ever!



## MODEL M-1 VACUUM

Portable Vacuum Cleaner

### APPLICATIONS

All hard and soft surface dry vacuuming tasks.

### BENEFITS

- Versatility. A vast array of tools and attachments allow you to clean virtually anything. Tools sold separately.
- Productivity. Whatever the application, there are tools that can save you time and money. With a 16” vacuum tool, the Model M-1 cleans three times faster than a 12” upright.
- Durability. The Model M-1 is designed for over 12,000 hours of use. Enough life to outlive about 24 single motor uprights.

### SPECIFICATIONS

Bag Capacity: 48 Quarts (53 L)  
Sound Level: 69 dBA

### WARRANTY

7  
Year



## HIGH DUSTING KIT

Clean over 20’ above the floor

### APPLICATIONS

Designed to clean any surface above the floor. Includes tools for walls, pipes and more.

### BENEFITS

- Versatile. Clean walls, pipes, shelves, HVAC ducts and more.
- Efficient. Quickly clean high areas without ladders or scissor lifts.
- Safe. Remove the risk of falling from your facility maintenance procedures. Lightweight interlocking wand lets you work from the floor.

### CONFIGURATIONS



## Innovative Fan-Forward Design



Why is the Model M-1 the best choice for overhead cleaning?

### 1 Extraordinary Air Flow

The powerful motor in the Model M-1 turns the large suction fan at 10,000 RPMs, generating a tremendous amount of air flow. Dust is sucked into the overhead cleaning tool before it has a chance to drift down to the floor.

### 2 Automatic Variable Suction

The large chamber in front of the suction fan allows air to recirculate when the tool opening is sealed. This means that the Model M-1 won’t stick to overhead surfaces like pipes, ledges, light fixtures, curtains or banners.



NSS extractors keep your carpets looking their best. There is a machine to meet every carpet cleaning need, each constructed for maximum performance, durability, and long life.

The Pony 20 SCA and Stallion 818 SC self-contained extractors are the choice for fast, effective cleaning. These NSS automatics complete your job in half the time of a tank extractor. Their tank-over-tank design improves sight lines and keeps machines balanced from job start to finish. Both of these machines can be used with optional upholstery and stair cleaning tools and a two-jet wand.

The Rally 1200 allows grout and tile cleaning, and restorative carpet cleaning from the same machine. For excellent cleaning performance in a rugged, durable design, the Rally tank extractors are ideal for hot and cold water carpet cleaning.



## PONY 20 SCA

22" Self-Contained Carpet Extractor (560 mm)

### APPLICATIONS

Carpet extraction in lobbies, meeting rooms, hallways, and other large areas.

### BENEFITS

- Improve productivity. Extract carpets at a rate up to 4,000 square feet per hour. Up to 4 times faster than a tank extractor.
- Variable speed drive motor helps reduce user fatigue. Essential for large jobs.
- Multipurpose functionality. Attach an upholstery tool and clean furniture as well.

### SPECIFICATIONS

Solution Tank Capacity: 20 gallons (76 L)  
Sound Level: 75 dBA



## STALLION 818 SC

18" Self-Contained Carpet Extractor (460 mm)

### APPLICATIONS

Carpet extraction in office areas, hotel rooms, and other smaller confined areas.

### BENEFITS

- Improve productivity. Extract carpets at a rate up to 2,000 square feet per hour. Up to 2 times faster than a tank extractor.
- Small form factor allows use in tight spaces.
- Multipurpose functionality. Attach an upholstery tool and clean furniture as well.

### SPECIFICATIONS

Solution Tank Capacity: 8 gallons (30 L)  
Sound Level: 77 dBA



## AERO PLUS

Three-speed Carpet Dryer

### APPLICATIONS

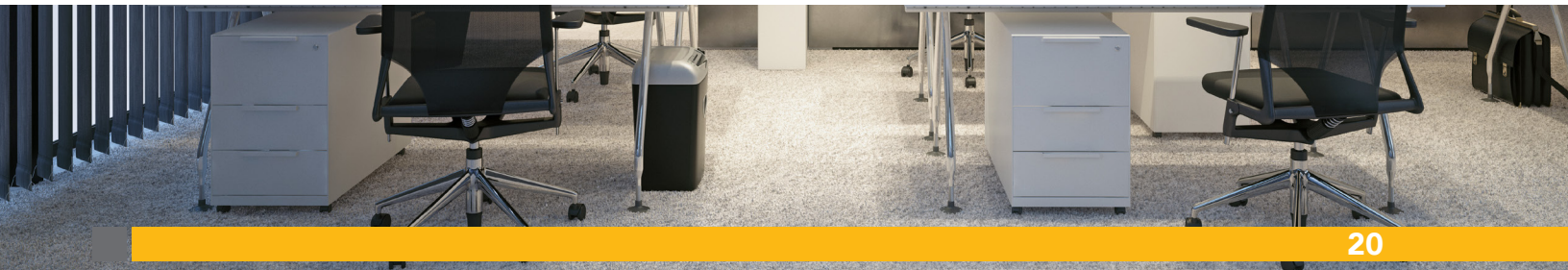
Dry carpets after cleaning. Dry entry areas during snowy or rainy weather. Accelerate floor finish drying.

### BENEFITS

- Three speeds. High speed for drying wet carpeted surfaces. Low speed for drying floor finish without rippling the surface.
- Versatile positioning. Direct the air flow where you need it by putting the Aero in one of four positions.
- Stackable for more power. Reduce drying time even further by stacking up to 3 Aeros together.

### SPECIFICATIONS

Fan Speeds: 700 / 850 / 1300 CFM  
Fan Speeds: 19.8 / 24.0 / 36.8 m<sup>3</sup>/min  
Sound Level: 67 dBA





## RALLY 55/55H

Portable Carpet Extractor

### APPLICATIONS

For quick cleaning of spills before they become stains.

### BENEFITS

- Compact and convenient. Small form factor and retractable handle make the Rally 55 easy to store and transport.
- Versatile. Use for spill recovery or upholstery cleaning.
- Effective. For improved effectiveness, add a 1000 Watt heater.

### SPECIFICATIONS

Solution Tank: 2.9 gallons (11 L)  
 Spray Pressure: 55 PSI  
 Sound Level: 79 dBA



## HYDROGLIDE 2

High Performance Carpet Wand

### APPLICATIONS

For use with any Rally extractor.

### BENEFITS

- Improved performance. Tear drop design and gentle curvature channels air flow improving solution recovery.
- Less fatigue. Low friction and high wear Delrin glide reduces the strain on operator's arms.

### SPECIFICATIONS

Spray Jets: Two  
 Weight: 6.4 lbs (2.9 kg)



## RALLY 220/220H

220 PSI Tank Carpet Extractor

### APPLICATIONS

Restorative cleaning of carpet and upholstery. Periodic maintenance of high traffic areas.

### BENEFITS

- Affordable performance. An outstanding combination of power and price.
- Designed for professionals. 45° elbow for draining into toilet, circuit locator, quick release cord wraps.
- Effective. For improved effectiveness, add a 2,000 Watt Heater.

### SPECIFICATIONS

Solution Tank: 12 gallons (46 L)  
 Spray Pressure: 220 PSI  
 Sound Level: 75 dBA



## RALLY 1200

1200 PSI Dual Surface Cleaner

### APPLICATIONS

Cleaning concrete, restoring tile and grout lines. Deep cleaning of carpet and upholstery.

### BENEFITS

- Versatile. Adjusts from 400 PSI to 1,200 PSI giving the right pressure for any application.
- Designed for professionals. 45° elbow for draining into toilet, circuit locator, quick release cord wraps.
- Efficient. Garden hose fill and recovery tank pump out for continuous use during tile and grout cleaning.

### SPECIFICATIONS

Solution Tank: 12 gallons (46 L)  
 Spray Pressure: Adjustable, 400 to 1,200 PSI  
 Sound Level: 75 dBA



## RALLY 500H

500 PSI Tank Carpet Extractor

### APPLICATIONS

Deep cleaning of carpet and upholstery. Periodic maintenance of high traffic areas.

### BENEFITS

- Deep cleaning. High pressure, 500 PSI, spray drives solution deep into fibers.
- Designed for professionals. 45° elbow for draining into toilet, circuit locator, quick release cord wraps.
- Effective. 2,000 Watt heater standard.

### SPECIFICATIONS

Solution Tank: 12 gallons (46 L)  
 Spray Pressure: 500 PSI  
 Sound Level: 75 dBA



## HARD SURFACE TOOL

High Pressure Rotary Wand

### APPLICATIONS

For use with the Rally 1200. Ideal for cleaning concrete, tile and grout lines.

### BENEFITS

- Dual spray jets turn the rotating bar at up to 1,400 RPM for deep cleaning of porous and uneven surfaces.
- The nylon housing and brush ring form an effective vacuum shoe, recovering spent solution.
- An ergonomic handle with a trigger controls the solution flow.

### SPECIFICATIONS

Spray Jets: Two  
 Weight: 12 lbs (5.4 kg)

**NSS Enterprises, Inc. (NSS) warrants its new machines against defects in material and workmanship under normal use, service and maintenance** (defined in the NSS Operation and Maintenance Manuals) **for the warranty period as detailed below.** This warranty is limited to machines and products that are purchased from an NSS Authorized Distributor or directly from NSS and is limited to the original end-user. Under this warranty, NSS will repair or replace, at its option, any covered part which is found defective in material or workmanship during the applicable warranty term or until the hour meter reaches the specified amount, whichever is first. This repair or replacement shall only be performed by an NSS Authorized Distributor or Service Center. All shipping charges for replacement parts or repaired machines will be the responsibility of the original end-user. When requested, machines and/or parts must be returned to NSS for inspection to obtain this warranty. NSS reserves the right for final determination of warranty coverage.

Parts repaired or replaced under this warranty are warranted for the remainder of the original warranty period. When covered, a maximum of 4 hours travel time will be allowed. When out of the continental USA, labor, freight and travel may have different considerations.

NSS will not be liable for any other or additional damages, including but not limited to indirect or special consequential damages arising out of or in connection with the furnishing, performance, use or inability to use the machine. The buyer agrees and understands that the remedies provided under this limited warranty are the sole and exclusive remedies available to the buyer. NSS reserves the right to change its warranty policy without notice.

**Start date of warranty for MACHINES**

The start date of this warranty is the purchase date by the original user, or six months from the date the machine was shipped from the factory, whichever is earlier.

**Start date of warranty for BATTERIES, including those installed in machines at time of purchase**

The warranty period for the batteries starts on the date of sale or 90 days after the machine was shipped from the factory, whichever is earlier. Batteries must be recharged at least once every 90 days.

**Exclusions**

**This warranty shall not apply to:** (1) Damage incurred during shipment. (2) Any product that has been subject to misuse, abuse, negligence, overloading or accident. (3) Improperly used products or use of the product for other than its intended purpose. (4) Failures due to lack of mandatory maintenance as described in NSS Operation and Maintenance Manuals, Videotapes and/or Wall Charts. (E.g., lack of scheduled lubrication or inadequate flushing of chemical solutions.) (5) Any machine modified from its original design (unless authorized by NSS) or repair services performed by non-authorized service centers. (6) Damage or failure resulting from the use of corrosive or incompatible chemicals. (7) Replacement of ordinary wear items including but not limited to: bumpers, belts, carbon motor brushes, electrical components exposed to moisture, filter bags, hoses, casters, wheels, gaskets, seals, cords, circuit breakers, switches, check valves, solenoids, pumps, squeegee blades, M-1 fans and fan hoods, and shoes on NSS manufactured cast aluminum tools. (8) Machines using after-market parts not supplied by NSS, including the ordinary wear items listed above.

Machines	Parts	Labor	Travel	Hour Meter	Exceptions
BP Ranger, Model M-1 "Pig", Thoroughbred, Charger 1500, Charger 2500	7 years	1 year	6 months	-	Thoroughbred with weights (1 year parts)
Champ, Wrangler, Charger battery burnishers, eForce	3 years	1 year	6 months	2500 hours	Hour meter limit does not apply to W2016, W1710/2010 and W1503.
Maverick, Mustang, Galaxy, Colt, Outlaw, Pacer 30, Pony, Stallion, Aero, Opti-Mist 20B, Swiftvac, Electro-Mist 4B	3 years	1 year	-	-	
Pacer 12/15 UE	2 years	1 year	-	-	Pacer 12/15 includes belt
Manta, Sidewinder, Alpha, Whisker, Rally, Opti-Mist P/BB/3E	1 year	1 year	-	-	
Other Components	Parts	Labor	Travel	Hour Meter	Exceptions
Polyethylene Rotomolded Tanks & Components	10 Years	1 Year	6 Months	-	
NSS Manufactured Cast Aluminum Tools	10 Years	1 Year	-	-	Does not include shoes
Tools and Accessories	1 Year	-	-	-	
SPE/Delta Q On-board Battery Chargers	2 Years	1 Year	6 Months	-	
Dual Pro On-board Battery Chargers	3 Years	1 Year	6 Months	-	
Batteries	1 Year, prorated	1 Year	1 Year	-	Prorated 1 year from warranty start date
Service Parts for out-of-warranty machines	90 Days	-	-	-	

Effective for machines purchased after October 1, 2020 (Revision U)







## HERE'S HOW TO SCHEDULE A DEMONSTRATION, PLACE AN ORDER, OR GET MORE INFORMATION

To schedule a demonstration at your facility, or to place an order for NSS equipment, contact your local NSS Distributor. To find the distributor nearest you, please call NSS at 800-677-1663 or visit our web site at [www.nss.com](http://www.nss.com).

### NSS ENTERPRISES, INC.

3115 Frenchmens Road (800) 677-1663 TEL  
Toledo, OH 43607-2958 (419) 531-3761 FAX  
USA info@nss.com

**NSS.COM**

NSS®, Wrangler®, and "Pig"® are registered trademarks of NSS Enterprises, Inc. All rights reserved.

Appearance and specifications of machines are subject to change without notice.

Availability of specific product models varies by country.

©2021, NSS Enterprises, Inc.,  
Printed in the U.S.A.

#9090013



Printed on paper  
that contains  
30% recycled  
post-consumer fiber.